



THE LONDON BOROUGH

Friends Forum AGM

30th November 2023

Hannah Jackson

Assistant Director, Environment (Carbon Management and
Greenspace)

Changes at Bromley

We have been pleased to welcome several new members of staff this year:

- Jane Askew, Platinum Jubilee Parks Fund Project Officer
- Karin Grey, Carbon Programme Manager
- Bill Moxham has permanently joined the Tree Team as a Tree Officer.

We have recently been recruiting and will shortly be joined by:

- Debra Van Jaarsveldt , Kelsey Lakes Project Manager
- Ashleigh Mumbaiiwa, Carbon Projects Officer

We are also in the process of interviewing and recruiting:

- Greenspace Contracts and Programmes Manager (new post)
- Parks and Open Spaces Manager
- We are advertising for another Tree Officer

We are also thrilled to share that Helen Stickling, Arboriculture Support Officer, was selected as one of ProLandscaper's 30 under 30 for 2023: [Pro Landscaper's 30 Under 30: The Next Generation 2023 winners revealed - Pro Landscaper Magazine](#)

Biodiversity Trials

- **Sustainable Planting** [Report No \(bromley.gov.uk\)](https://bromley.gov.uk)

In March 2023, a trail of sustainable planting at 10 sites across the borough that have struggled to flourish under the current management regime. This will see a move away from degenerative single use products to regenerative planting making use of perennials.

Planting lists were shared with stakeholders, with feedback impacting the final planting lists used.

Planting has now taken place, with publicity due to launch after the pre-election period.



- **Nature Friendly Verges**

Trial launches in March at 11 sites across the borough, with these sites receiving their annual cut in September.

Residents can find out more about the trial and provide their feedback at

www.bromley.gov.uk/naturefriendlyverges

To date: 486 responses to the online survey which reopens in March 2023.

LEFT UNCUT FOR BEES,
BUTTERFLIES, AND INVERTEBRATES



Consultations



Public Space Protection Orders (PSPOs): Dog Controls

- In June 2023, and following consultation, the Council renewed and amended its PSPO powers in relation to dog controls.
- The new order included a continuation of previous PSPO dog controls such as anti-dog fouling, dogs on leads on roads and pavements, and a new limit on the number of dogs any one person can walk at one time.
- Aim to ensure that streets and parks remain safe and enjoyable for all.
- More information at www.bromley.gov.uk/dogcontrol

Park User Satisfaction Survey: [Park user satisfaction survey \(bromley.gov.uk\)](http://bromley.gov.uk)

- First year where the survey was open to all online. 1024 responses were received; 64% of respondents were satisfied with the borough's parks and greenspaces.
- Respondents were most satisfied with the management of the borough's woodlands, grass and floral displays, and most dissatisfied with facilities and cleanliness.
- The main reasons for visiting parks are exercise and activities with children, closely followed by relaxation and dog walking.
- Cleanliness was the most selected priority for parks, with there being a significant increase in respondents selecting play areas as a priority for 2023.



Platinum Jubilee Parks Fund

The annual update report was given in June 2023: [Report No \(bromley.gov.uk\)](https://bromley.gov.uk)

Congratulations to those groups who have been successful: 38 applications have been approved to date, equating to £559k.

Read more about some of the projects that have been delivered here:

[Alexandra Recreation Ground and Cator Park](#)
[Pratts Bottom Common](#)
[Petts Wood Recreation Ground](#)
[Betts Park](#)



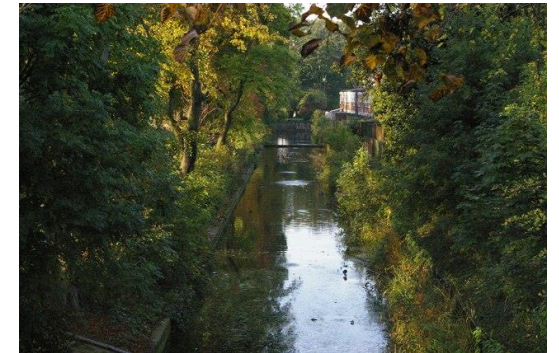
Park Projects: Infrastructure

- **Croydon Road Recreation Ground Bandstand:** work to restore the Grade II listed bandstand are underway following the procurement of contractor AF Starr in July 2023. Works are due to complete in the new year.
- **Kelsey Park Bridge:** surveys have been completed and we are due to be out to tender imminently.
- **Hoblingwell Perimeter Fence:** finalising prices and design features for installation in the Spring.
- Plenty of infrastructure repairs to pathways and fencing for example undertaken in parks and open spaces as we prioritise those most urgent.



Waterbodies

- **Kelsey Park:** initial survey work underway, with some (time sensitive) ecology surveys completed earlier in the year which will support the preparation of tender documents.
- **Betts Park Canal:** a desilting project was completed in August 2023.
- **Glassmill Pond:** Led by Thames 21, this project has not only desilted the pond but also made changes to restore the River Ravensbourne's natural processes for sediment transport to improve fish passage and create new wildlife habitat for riverine species.



[Report No \(bromley.gov.uk\)](https://bromley.gov.uk)

Sport in Parks

Lawn Tennis Association : [Report 2021 \(bromley.gov.uk\)](https://www.bromley.gov.uk/reports-and-accounts/2021-22/lawn-tennis-association-report-2021)

- The Council's Leisure team has secured a grant of £231k from the Lawn Tennis Association (LTA) to fund improvements at 10 tennis courts across the borough, including renovation at Church House Gardens, Coney Hall Recreation Ground, Goddington Park and Poverest Park.
- Works have commenced on site
- Negotiations are progressing to find an operator to manage these newly refurbished courts.



Non-Turf Cricket Pitches: [Report No \(bromley.gov.uk\)](https://www.bromley.gov.uk/reports-and-accounts/2021-22/non-turf-cricket-pitches-report-2021)

- London Cricket Trust have approached the Council about funding for new Non-Turf Cricket pitches in the borough to increase cricket provision, with £40k earmarked to install pitches at four sites in the borough, designed for use by both established cricket clubs and for casual use.
- Activation of sites is to be supported by Kent Cricket SE London, with income use to support ongoing maintenance.

Crystal Palace Park

Significant work across departments has gone into preparing for and transferring the park to the Crystal Palace Park Trust, who are now responsible for the parks management and maintenance under a 125 year lease:

[Crystal Palace Park set to thrive following historic handover – London Borough of Bromley](#)

This is a major step in the delivery of the Council's Regeneration Plan for the park.

Earlier in the year, the Council's Regeneration team secured £300k National Lottery Heritage Fund monies to work up a £5m bid, as part of the wider regeneration plans for the park: read more here - [Crystal Palace Park awarded funding to proceed with £5 million grant application to kickstart regeneration plan – London Borough of Bromley](#)



Arboriculture

Tree Management Strategy 2023 - 2027: [Report No \(bromley.gov.uk\)](https://bromley.gov.uk)

- In March 2023, the Council adopted a new Tree Management Strategy for 2023 – 2027 which sets out the Council's aims and objectives for the management of trees in the borough, which includes the largest number of street and park trees in London.
- The Strategy includes 25 policies to inform decision making and our approach to tree management: [Tree Management Strategy](#)



Tree Management Strategy

2023 - 2027

Delivery of Arboriculture Services

The Executive approved recommendations to procure additional contractors to deliver arboriculture services and add resilience to the supply chain, and this work is underway.

Treemendous



An update report was given in September: [Report No \(bromley.gov.uk\)](https://bromley.gov.uk)

In the second year of planting, the programme planted 1,590 trees of which 1,250 were additional 'treemendous' trees. 231 were planted in locations identified by residents or councillors.

At the end of September, the assessment of trees planted in the 22/23 planting season reported a mortality rate of 2.5% (including vandalism).

Planting for year 3 (the 2023/24 season) has [begun](#): 1510 trees are due to be planted, of which 1250 are additional treemendous trees.

QR codes are on newly planted trees and are operational on IOS, and will be launched on Android later in the winter.

After the pre-election period, we start publicity to recruit Tree Friends to support next year's watering: find out more at www.bromley.gov.uk/treefriends.





THE LONDON BOROUGH

Thank you for listening
Hannah.Jackson@bromley.gov.uk