

Bromley Parks & Open Spaces Highlights January – March 2023



In partnership with



Countryside and Education Team

In partnership with



Dutch Elm Disease Resistant Elms



The Friends of High Elms under the guidance of Andrew Harby and volunteer Martin Jordan have planted 30 Dutch Elm Disease Resistant Elm cultivars. Not only to restore High Elms to High Elms but to support declining White Letter Hairstreaks as part of the Brilliant Butterflies Project funded by Butterfly Conservation

Bat Hibernation Surveys



Good bat numbers found including Daubentons, Natterers , Wiskered/ Brandts and Brown long eared plus a rare tissue moth



In partnership with



Jubilee County Park - Small Mammal Walk



Allowing people to get up close and find out all about the small nocturnal creatures of the park. In addition to the survey work forming part of our ongoing monitoring of ecosystem health.

National Nest Box week @ BEECHE



BEECHE Bugs



Searching Elmfield for Eggs



A repeat egg count at Elmfield Wood showed there to be close to double the number of Brown hairstreak eggs seen in 2022 indicating population increase. 11 purple hairstreak eggs on nearby oaks were also found

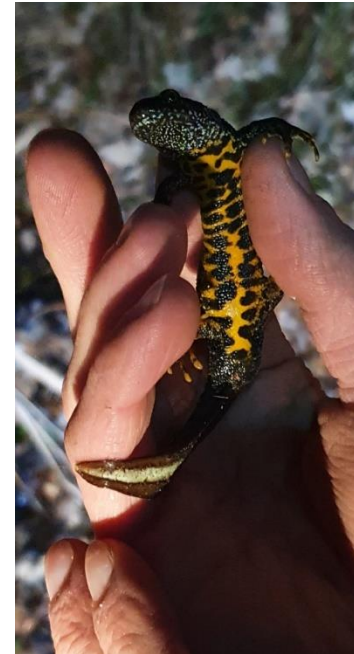
Kidney Vetch Seeding Across Bromley



In partnership with



Amphibian Surveying



In partnership with



Orchids on their way ...



Early Purple Orchid



Bee Orchid



Fly Orchid

Friends Forum Training

This year the Countryside Team will deliver 5 free training sessions for the Friends Forum members

- Conducting Amphibian Surveys- Netting at Scadbury Park - **April**
- Summer Leaf and Tree Identification - **June**
- Biodiversity in Amenity Spaces - **July**
- Invasive Species - **September**
- Winter Twig Identification - **December**

We will also be delivering an online 'Leading Friends Workday Safely' session and an extra course 'Principles of Habitat Management' in October as a paid session.



Countryside Supervised Volunteers

January 2023

- Countryside Supervised Volunteer Hours = 851
- Total Supervised Sessions 2023= 32
- Total Supervised Hours 2023 = 851

Total supervised hours for 2022= 9368.65

February 2023

- Countryside Supervised Volunteer Hours = 1021.5
- Total Supervised Sessions 2023 = 65
- Total Supervised Hours 2023 = 1872.5

Total supervised hours for 2022= 9368.65

March 2023

- Countryside Supervised Volunteer Hours = 697hrs
- Total supervised sessions 2023 =90
- Total Supervised hours 2023 = 2.569 hrs

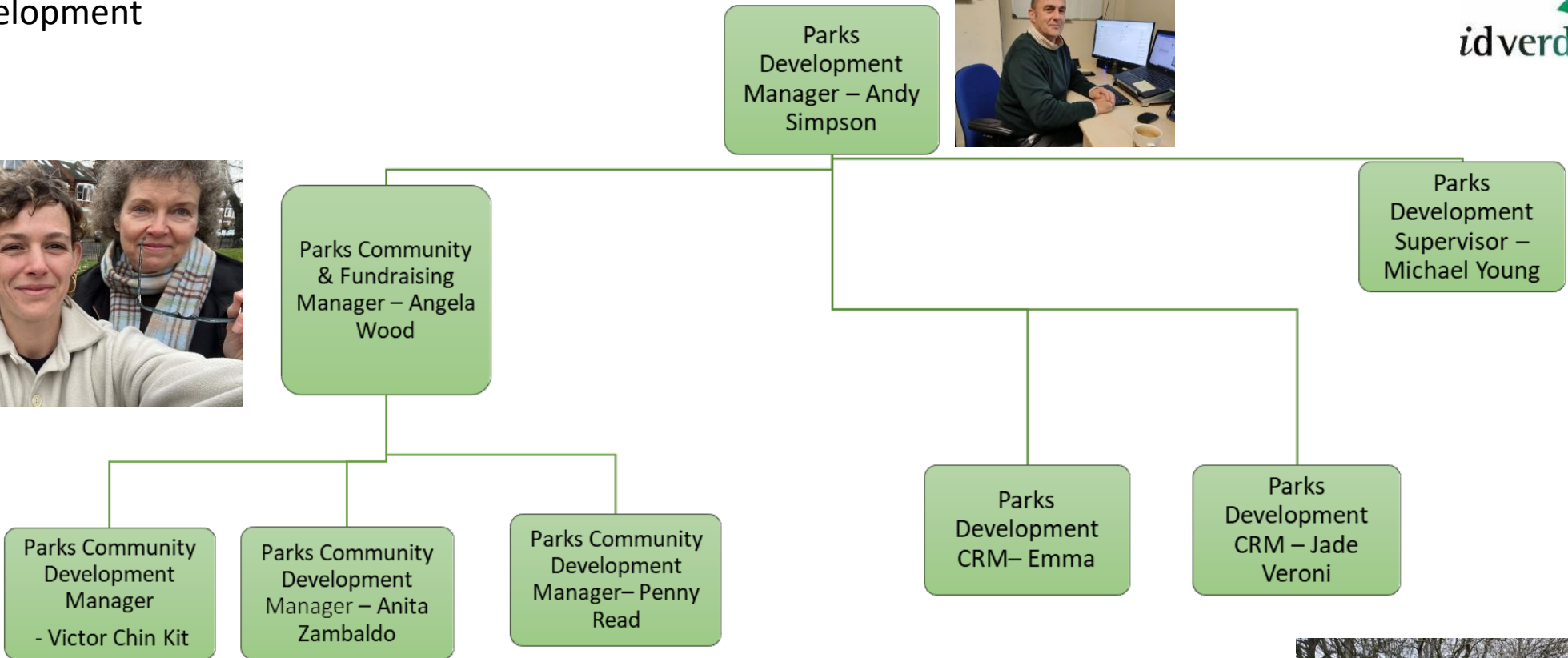
Total Supervised hours 2022 = 9.368.65

Parks Development Team

In partnership with



Parks Development



Royston Field – Hedgerow Planting

Penge Green Gym – planted new hedgerow over at Royston Field.

Hedge saplings provided by The Countryside Charity (CPRE)

Ground prepared and woodchip provided by *idverde*



In partnership with



Beckenham Green



In the meantime, Friends of Beckenham Green staunchly repaired and added to their newly-planted hedgerow, which had been vandalised - twice. The Friends went on to clear weed and bramble, to allow the ferns and hellebores a chance to breathe.



In partnership with



Belmont Bears & World Book Day

B
E
F
O
R
E



A
F
T
E
R

Friends of Chislehurst Rec helped Friends of Belmont Open Space remove graffiti and paint from "Goldilocks", one of Belmont's Bears.

Earlier in the week, FBOS placed painted wooden plaques of characters from children's books around the play area for World Book Day.



In partnership with



College Green, Bromley



Bromley Green Gym helped local Brownies plant two trees (winter-flowering cherry and crab apple) which the troop donated to the Green

In partnership with



Winsford Gardens

WINTER IN WINSFORD GARDENS



We have been making new benches with chestnut wood tops

Snow on the mound and new stepping logs in →



the children's play area.

Some shrubs are very colourful in winter. Look out for the dogwoods.

Red, green → and yellow stems



Look out for plants starting to grow after their dormant period — bulbs like daffodils and crocuses.

← This is a shrub called witch hazel. Maybe you'll spot it.



There's often a fox or two in the park.



The birds are looking for winter food — berries and seeds.

Penge Green Gym renewed their rustic seating area, replanted a shrub border after building works and planted up the fourth edge of the formal rose garden with *Lonicera* provided by LBB & idverde.

In partnership with



Keep Britain Tidy



Friends of the Earth, Friends of Cator & Alex and Friends of Bromley Town Parks & Gardens were just some of the groups to engage with the Keep Britain Tidy campaign in March.

In partnership with



Petts Wood Recreation Ground/ Crofton Woods Noticeboards



A fabulous collaborative project between The Friends of Crofton & Sparrows Woods who approached Bromley College, where the students there constructed three brand new notice boards.

Our Parks Development Team helped install the one for Petts Wood Recreation Ground and the others were installed with the Friends & Countryside Team at the entrances to Crofton Woods.



In partnership with



Cator Park - Path Edging and Line Markings



Great collaborative work in Cator Park! *idverde* Grounds Maintenance team has been busy edging the paths, which inspired the Friends of Cator & Alex to run a late evening session to help them out! New line markings were added soon after, giving the paths a fresh look!



In partnership with



THE LONDON BOROUGH
www.bromley.gov.uk



Alexandra Recreation Ground



Prince's Trust



7 Princes Trust Youth Team Programme participants and their supervisors joined Friends of Cator & Alex to weed the large and rather challenging shrub border around the Lodge House in the park.

GoodGym volunteers joined the Friends for a further weeding session, and a third session resulted in a total of 99 volunteering hours in just one week!



In partnership with



Chislehurst Commons Visit

Friends of Darrick Wood joined Chislehurst Conservators for a walk across the Commons, to learn how the Conservators operate. Staff from *idverde* joined them and enjoyed an informative walk, taking in woodland, grassland and other habitats.



Priory Gardens Community Payback



Community Payback have been undertaking restoration projects in Priory Gardens, including painting the parks infrastructure, edging the paths, mulching the rose beds and native hedgerow planting.



In partnership with



Fundraising Updates

In partnership with



Scadbury Moated Manor



Scadbury Moated Manor has come to the end of the first phase of the conservation project to protect the brickwork in urgent need of attention.

Earlier this month we met on site with Historic Consultant Pierra and ODAS to check for any defects in the works.

Everyone, was really pleased with the outcome, which will hopefully preserve the structure for another 500 years.



In partnership with



Junior Friends of Hobblingwell



The Junior Friends of Hobblingwell concluded the first year of the project set up by the Friends and funded by Clarion Housing. The project led by Darren Russell and Jane Myles was an initiative to encourage young people engage in practical conservation volunteering, while educating about biodiversity and habitat management.

They had their award ceremony at the weekend attended by the deputy Mayor.

In partnership with



Cudham Recreation Ground Playground



Consultation has begun for the Cudham Recreation Ground Playground Project.

Over their first year, the newly formed Friends of Cudham Rec have been very actively working towards raising funds, including through their successful application for the Platinum Jubilee Grant.

Consultation is open until 16th April, so please support the group and 'Have your say!'.

In partnership with



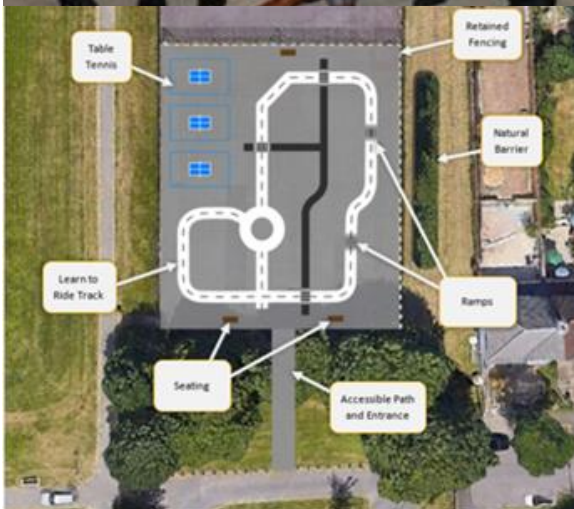
Coney Hall Play for All Ball

The Friends of Coney Hall have been raising funds for their 'Play for All' project at Coney Hall Rec.

The project aims to increase sporting and active opportunities in the park through installation of a new MUGA on site and turn a disused tennis court into a table tennis and learn-to-ride area.

A ball was held in March, which raised a very impressive £9500!

They plan to host further events, including an inflatables day at the end of April to raise more money towards the project.



In partnership with



Glassmill Pond



Meanwhile over at Glassmill pond, Thames 21 and the Friends of Bromley Town Parks have begun to the preparation phase of the project to restore the pond, largely funded by the Environment Agency.

The Friends have also joined T21 on multiple vegetation and litter clearance days.

The pond was electro-fished to relocate the fish ready for the desilting work.

Much to all our surprise they found 3 eels amongst the evacuees! Eels are a protected and valuable species to Freshwater ecosystems.

Froglife



Idverde have been partnering up with Froglife to scope out possible areas that can be improved with habitat restoration and improvement grants that will help support our amphibious friends.

We hope this might be the start of a new project for our parks and greenspaces in the not-too-distant future.

In partnership with



Thank you for all your continued dedication and support in making Bromley even better!

Any Questions?

In partnership with

