



THE LONDON BOROUGH

Friends Forum

28<sup>th</sup> June 2023

**Hannah Jackson**

Assistant Director, Environment (Carbon Management and  
Greenspace)

# Platinum Jubilee Parks Fund

## Parks Projects applications:

- An additional 11 applications were received in April 2023, bringing the total number of applications to 40.
- 31 projects have been approved at a value of £450k.
- 2 proposals within St Paul's Cray are awaiting a decision.
- A further 3 require scoping, and the Council is not proceeding with an additional 4 at the moment.
- Delivery on approved projects where all funding in place is commencing, with a busy summer ahead.
- Delivery on approved projects is now proceeding, and it is anticipated that around 15 will be delivered by December this year
- Next deadline for applications is 1<sup>st</sup> October 2023. Applications are particularly encouraged from Biggin Hill, Bromley Town Chelsfield and Mottingham Wards.

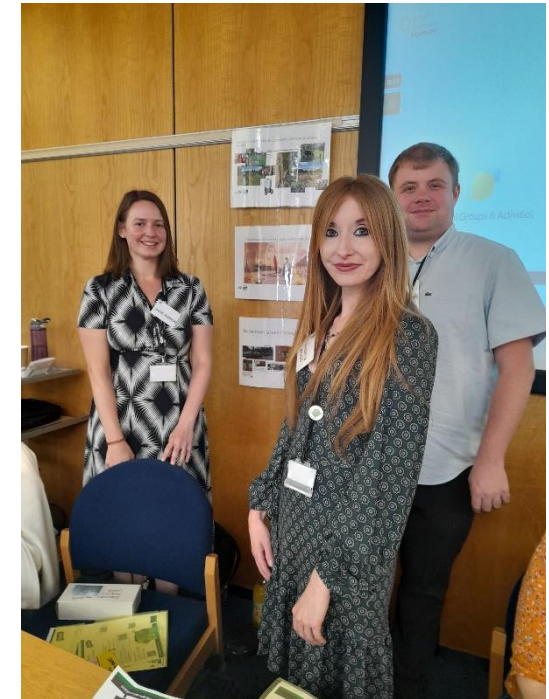
# Platinum Jubilee Parks Fund (2)

Platinum Jubilee Parks Fund – amount awarded by ward

Ward	Total Available	Total Remaining
Beckenham Town & Copers Cope	£40,000	£20,000
Bickley & Sundridge	£40,000	£37,106
Biggin Hill	£40,000	£40,000
Bromley Common & Holwood	£40,000	£17,808
Bromley Town	£40,000	£40,000
Chelsfield	£40,000	£40,000
Chislehurst	£40,000	£2,489
Clock House	£40,000	£37,000
Crystal Palace & Anerley	£40,000	£20,000
Darwin	£40,000	£0
Farnborough & Crofton	£40,000	£20,000
Hayes & Coney Hall	£40,000	£0
Kelsey & Eden Park	£40,000	£0
Mottingham	£40,000	£40,000
Orpington	£40,000	£20,000
Penge & Cator	£40,000	£0

## Promotion of the Fund:

- We now have a table on the fund webpage detailing the amounts remaining in each ward.
- We are now working on a series of focus press releases highlighting and promoting applicants approved projects.
- LBB and *idverde* recently promoted the fund at the ‘*Tackling Loneliness Summit*’ and we will look for other such opportunities to do so.



# Water body management

## Kelsey Park

A provisional allocation has been added to the capital programme for silt removal at Kelsey Lakes. A report is going to Council Committee on the 29<sup>th</sup> June to request the draw down monies for surveys, proceed to procurement for a contractor to deliver the work and fund a project manager to oversee it.

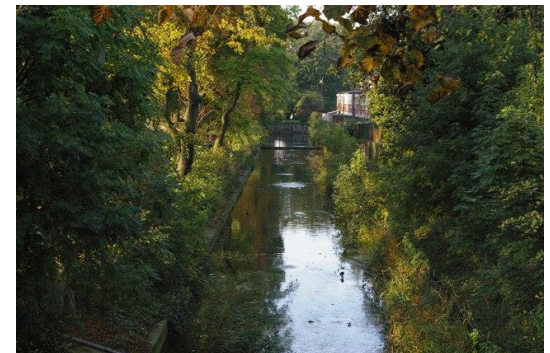
Initial ecology surveys have already started.

## Other Water Bodies

Initial investigative work on waterbodies at Priory Gardens, Keston Common, Hollydale Recreation Ground, Church House Gardens and Bromley Palace Park has now commenced.

The project to de-silt Betts Park Canal, has a tentative start date of 14<sup>th</sup> August 2023, however this is weather dependent.

The Glassmill Pond project continues and is awaiting management plan and access licence.



# Infrastructure

## Infrastructure projects - update

### 1. Hoblingwell Perimeter Fence

The additional funding set aside for infrastructure is enabling us to fund perimeter fence improvements to Hoblingwell Wood Recreation Ground – we are currently out to tender with a return date of the 21<sup>st</sup> July.



### 2. Kelsey Park Bridge

- Officers continue to work in accordance with the timetable on the website.
- There will be some site activity in July as both the Geotechnical Survey and Additional Survey work takes place.



### 3. Croydon Road Bandstand

- Contract awarded to AF Starr Ltd
- Works on site are due to commence on 10<sup>th</sup> July and complete at the end of the year.



# Nature Friendly Verges

LEFT UNCUT FOR BEES,  
BUTTERFLIES, AND INVERTEBRATES



- Around 400 responses to the survey have been received, with 73% supportive of the management regime, with a reduction to 64% when feedback is provided on a specific verge.
- We are beginning to see wildflowers establish on some of the verges, including purple orchids which have been popular with butterflies.
- We have reassessed fire risk on the verges following some new advice from the LFB and will be making some small changes to the sites to manage this.

# Public Space Protection Orders – Dog Controls

Link to committee report [here](#).

The existing dog PSPO for dog control make it an offense to:

- Fail to remove dog faeces
- Fail to put and keep a dog on a lead when directed to do so by an authorised officer
- Fail to keep a dog on a lead in identified areas
- Being in charge of a dog that enters a designated exclusion zone
- Walking more than four dogs without a licence issued by the Council.

The renewal of these powers will include the following amendments:

- Limit the number of dogs a person can oversee to three (3) dogs per person;
- Reduce the number of dogs which can be walked under licence to four (4) dogs
- Extend the Dogs on Lead designated areas to include all Cemeteries, Allotments, and park café seating areas within Bromley Council's administrative area.

# Public Space Protection Orders – Dog Controls

Consultation – 3141 responses.

Following analysis and consideration of the responses, the following changes have been made to the draft order:

- Schedule 1 Article 5 Dog Handlers – Maximum 4 Dogs. **The final Order has removed the restriction permitting only two (2) dogs to be off lead at any one time.** Dogs are permitted off the lead in parks and greenspaces, with the exception of certain exclusion areas listed in the Order (e.g. playgrounds). Any owner/handler of Dogs to be found acting in a manner so as to cause nuisance will be directed to place Dogs on Lead as per Schedule 1 Article 2 – Dogs on Lead by Direction contained within the Final Order
- Schedule 2 Article 3 Dog Exclusion Areas detailed **Waterbodies**. The Proposed Order detailed an exclusion zone of where a dog is to be kept on a lead up to 30 feet of a Waterbody. The detail of thirty feet as an exclusion area has been removed from the Order, leaving just the actual body of water as the area dogs are excluded from entering.
- Schedule 2 Article 3 Dog Exclusion Areas – Sports facilities enclosure sites. For identification purposes the list of locations also include the description of the sport played within the enclosed site (e.g. tennis court).



# Arboriculture

## Treemendous



- Over 1500 trees planted by the end of the planting season, including 1250 additional trees.
- Watering programme launched in May with each newly planted tree receiving 50l of water weekly
- Encouraging residents to supplement this water programme:
  - Over 3,000 letters distributed to residents living adjacent to newly planted trees
  - Press release on 19<sup>th</sup> June including link to instructional video
  - Tree Friends toolkit to be relaunched in July with additional comms to encourage sign up
  - QR codes delayed but due to be launched on 3<sup>rd</sup> July.

## Delivery of Arboricultural Services

- Subject to approval from the Executive on 5<sup>th</sup> July, the Council will be procuring additional suppliers to supplement the existing arrangements for the delivery of arboricultural services, both on a short-term and medium term basis.
- Unfortunately, Ian Dalton and Bill Moxham have decided to leave Bromley. We are currently out to advert for two new Tree Officers to join the team, with responsibilities for wards redistributed across the rest of the team on a temporary basis

Ward Name	Tree Officer
Biggin Hill	Kevyn Wightman
Bromley Common & Holwood	Kevyn Wightman
Chelsfield	Kevyn Wightman
Darwin	Kevyn Wightman
Farnborough & Crofton	Kevyn Wightman
Hayes & Coney Hall	Kevyn Wightman
Kelsey & Eden Park	Kevyn Wightman
West Wickham	Kevyn Wightman
Beckenham Town & Copers Cope	Mark Byfield
Bromley Town	Mark Byfield
Clock House	Mark Byfield
Crystal Palace & Anerley	Mark Byfield
Penge & Cator	Mark Byfield
Plaistow	Mark Byfield
Shortlands & Park Langley	Mark Byfield
Bickley & Sundridge	Simon Hobbs
Chislehurst	Simon Hobbs
Mottingham	Simon Hobbs
Orpington	Simon Hobbs
Petts Wood & Knoll	Simon Hobbs
St Mary Cray	Simon Hobbs
St Paul's Cray	Simon Hobbs



THE LONDON BOROUGH

Thank you for listening  
[Hannah.Jackson@bromley.gov.uk](mailto:Hannah.Jackson@bromley.gov.uk)